A large, stylized illustration of a satellite or space station in the top left corner. It has a cylindrical body with various panels and a large rectangular solar panel array extending from it. The illustration is in a golden-yellow color against the dark blue background.

QUEEN'S CONFERENCE ON EDUCATION 2026

DELEGATE PACKAGE

JAN 24 - 25, 2026

**TEACHING BEYOND THE STARS:
CHARTING THE FUTURE OF EDUCATION**

A stylized illustration of a constellation in the bottom right corner. It consists of several golden-yellow stars of varying sizes connected by thin lines, forming a geometric shape. The background is a dark blue gradient with scattered small white dots representing distant stars.



Table of Contents

Welcome Letter	4
Our Team	5
Weekend Itinerary	6
Map of Venue	7
Conference Conduct	9
Conference Checklist	10
Keynote Speakers	11





Table of Contents

Workshop Presenters 13

Panel Description 15

Banquet Information 16

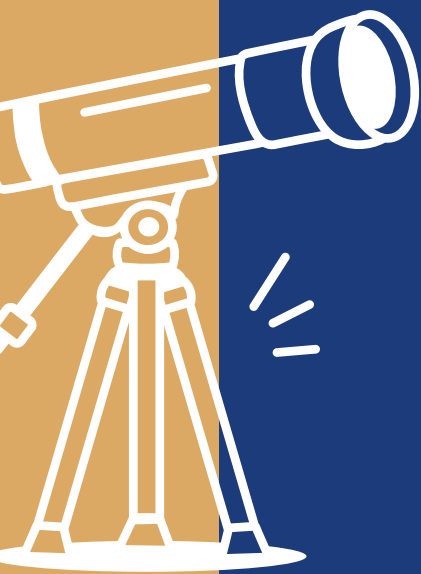
Transportation in Kingston 17

From Hotel to Conference 18

Kingston Eats 19

Conference Partnerships 20

Thank You Letter 21





WELCOME LETTER

Welcome to Queen's Conference on Education (QCE) 2026!

This year, the QCE Executive Team is thrilled to host over 165 delegates from both the Queen's community and beyond. We are privileged to welcome an incredible lineup of industry professionals who will share their expertise, tools, and strategies throughout the weekend. Our hope is that every attendee leaves the conference feeling inspired, enlightened, and equipped with valuable knowledge and fresh perspectives to carry forward into their future endeavors in education.

This year, the theme of the conference is Teaching Beyond the Stars: Charting the Future of Education. We aim to provide future educators with an inspiring experience that will help them in their future endeavors. Our QCE Executive Team is pleased to present 8 workshops that cover a wide variety of topics, a panel discussion, and 2 incredible keynote speakers that will all contribute to your development as a professional.

Our executive team has worked really hard for the past 10 months to organize this conference and we look forward to hearing your feedback! If you have any questions throughout the weekend, please do not hesitate to contact one of the executive members, or find us in our uniformed navy-blue vests during the conference!

We hope you have an amazing weekend!

Sincerely,

The QCE 2026 Executive Team

Isabella Vito, Conference Chair

Brooke Simons-Vatch, Director of External Logistics

Abigail Bickford, Director of Internal Logistics

Paige MacLachlan, Director of Finance

Isaac Moreno, Director of Special Events

Brooklyn Makins, Director of Sponsorship

Stephanie De Castro, Director of Marketing



OUR TEAM



ISABELLA VITO
Chair



ABIGAIL BICKFORD
Director of Internal Logistics



BROOKE SIMONS-VATCH
Director of External Logistics



PAIGE MACLACHLAN
Director of Finance



ISAAC MORENO
Director of Special Events



BROOKLYN MAKINS
Director of Sponsorship



STEPHANIE DE CASTRO
Director of Marketing





WEEKEND ITINERARY

DAY 1 - JAN 24

DUNCAN MCARTHUR HALL

- 8:30 am** - Registration and Delegate Breakfast
- 9:45 am** - Welcome Messages
- 10:15 am** - Keynote Presentation - Chris Wilson
- 11:20 am** - Networking Event and Professional Headshots
- 12:00 pm** - Workshop Section 1
- 1:15 pm** - Lunch
- 2:30 pm** - Workshop Section 2
- 3:30 pm** - Closing Remarks

DAY 1 - BANQUET

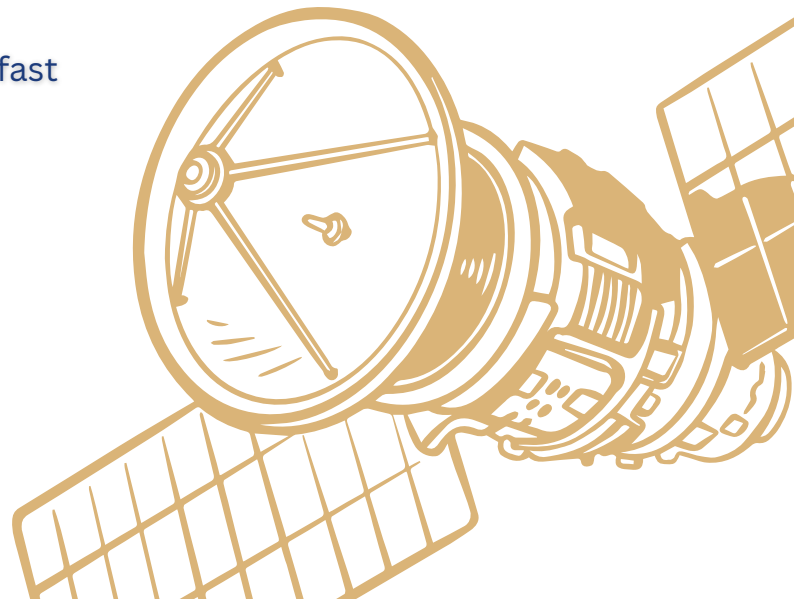
MARRIOTT

- 6:15 PM:** Doors Open & Guest Check-In
- 7:15 PM:** Opening Remarks (Please be seated by this time)
- 7:30 PM:** Dinner Service Begins
- 7:30-8:30 PM:** Dinner
- 9:00 PM:** Dance Floor Opens
- 9:00-11:00 PM:** Dancing & Celebration
- 11:00 PM:** Event Concludes

DAY 2 - JAN 25

DUNCAN MACARTHUR HALL

- 8:30 AM:** Registration and Delegate Breakfast
- 9:30 AM:** Opening Remarks
- 9:45 AM:** Keynote - Jennifer Casa-Todd
- 11:00 AM:** Workshop Section 3
- 12:00 PM:** Lunch
- 1:00 PM:** Workshop Section 4
- 2:00 PM:** Panel
- 3:15 PM:** Closing Remarks





DUN MAC MAP



FIRST FLOOR MAP

LINK TO INTERACTIVE MAP: <https://duncanmcarthurhall.expofp.com/>



DUN MAC MAP

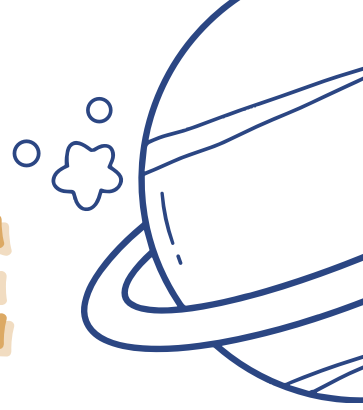


SECOND FLOOR MAP

LINK TO INTERACTIVE MAP: <https://duncanmcarthurhall.expofp.com/>



CONFERENCE CONDUCT



DRESS CODE:

QCE is a professional development conference, so we encourage delegates to dress in business casual attire. For inspiration, think outfits you would wear to practicum placements. Check out our Instagram for more examples and ideas! Most importantly, dress in what you are most comfortable in for two busy days! For the banquet, we encourage everyone to maintain a professional and sophisticated look. Don't forget the night will be full of dancing so once again be comfortable!

CONFERENCE ETIQUETTE:

As a delegate at QCE 2026, we kindly remind you to uphold proper etiquette throughout this professional conference. This includes using respectful and appropriate language when interacting with fellow attendees, speakers, industry professionals, and the executive team. We also encourage active listening during talks, workshops, and networking opportunities to foster meaningful engagement. By doing so, we can collectively maintain the educational vision of the event and ensure a safe and welcoming environment for everyone in attendance.



CONFERENCE CHECKLIST

- Student or Government issued ID
- Something to take notes on (notebook, iPad, or laptop)
- A pen or pencil
- Water bottle
- Snacks (some will be provided) and lunch
- Screenshot of completed event form (mandatory)

BANQUET CHECKLIST

- Government issued ID
- Screenshot of completed event form (mandatory)
- Cash or card for drinks at the bar



DAY 1

PRESENTER

CHRIS WILSON



Chris Wilson is a former helicopter pilot and aircraft maintenance engineer with 14 years of experience navigating high-pressure decisions in remote environments. Now a keynote speaker, founder, and two-time bestselling author, Chris blends cockpit decision-making with grounded leadership insights. He's been trusted by leading organizations, including TED, UC Berkeley, UBC, and the Project Management Institute, to help individuals and teams lead with clarity, navigate uncertainty, and build unstoppable momentum.

PRESENTATION: HOW LEADERS TURN OBSTACLES INTO OPPORTUNITIES AND BUILD UNSTOPPABLE MOMENTUM.

In a world where teams face constant change and leaders are stretched thin, Momentum Shift provides a clear path forward. Through stories from the cockpit and the boardroom, Chris reveals how small, deliberate shifts in mindset, systems, and action can unlock exponential results. This keynote helps audiences see challenges from a higher altitude, build consistency through systems, and commit to progress even when the path gets turbulent.

DAY 2

PRESENTER

JENNIFER CASA- TODD



Jennifer Casa-Todd is a wife, mom, educator, former Literacy Consultant, and the author of several books focusing on Digital Leadership. Jennifer was the recipient of the YSCPC Teaching Excellence Award (2023), and recipient of the ISTE Digital Citizenship Network Award (2020). She is an Ontario Google Educator Group leader, a Google Certified Innovator, and a board member for the Canadian Library Association. Jennifer has a Masters in Education with a specialization in Curriculum and Technology. Jennifer can currently be found supporting pre-service teachers at Lakehead University (Ontario). She has been a presenter, featured speaker, and keynote speaker at conferences across Canada, the US and virtually around the world. She is passionate about amplifying student voice and showing teachers, parents and students how they can use technology positively and productively.



WORKSHOPS DAY 1



VENUS WORKSHOP: EMILY MILLAR

Emily Millar is a Registered Psychotherapist who supports children and teens through mindfulness, creativity, play, and evidence-based therapeutic approaches. Her work helps educators and caregivers better understand emotions as meaningful signals connected to unmet needs. In her workshop, Emily introduces the Emotion Clubhouse framework to support emotional awareness, regulation, and expression in the classroom. Participants will leave with practical, compassionate strategies to create spaces where all emotions are welcomed and validated.



EARTH WORKSHOP: REBECCA SEILING & MELANIE TAYLOR

Rebecca Seiling is an educator and founder of Nature Connect, specializing in outdoor, land-based learning rooted in relationship and play. Melanie Taylor brings nearly 20 years of experience in education and a strong commitment to experiential learning. Together, they guide educators in meeting curriculum expectations through meaningful outdoor learning experiences. Their workshop offers hands-on activities and adaptable strategies to help participants confidently connect learning to place, land, and student curiosity.



URANUS WORKSHOP: ANDREW WACHNER

Andrew Wachner is a veteran educator with 24 years of experience teaching science, math, and physics. Alongside his classroom work, he has held leadership roles within the OSSTF for over two decades, including Branch President and Chief Negotiator. His workshop explores how teacher unions serve as powerful spaces for leadership development, advocacy, and systemic change. Participants will gain insight into how professional engagement beyond the classroom can shape their careers as educators and leaders.



NEPTUNE WORKSHOP: OYA PAKKAL, JAIME BARRATT

Dr. Jaime Barratt is an Assistant Professor at Brock University specializing in early childhood education, physical literacy, and outdoor play, while Oya Pakkal is a PhD candidate and instructor focused on inclusive education and youth development. Drawing from their experience in post-secondary teaching, they explore the evolving role of artificial intelligence in education. Rather than policing AI use, their workshop reframes it as an opportunity for creativity, compassion, and ethical learning. Participants will engage in redesigning assessments that promote AI literacy and responsible use.



WORKSHOPS DAY 2



MERCURY WORKSHOP: PAUL AKPOMUJE

Paul Akpomuje is a PhD candidate in Education at Queen's University whose research explores poetics, migration, and identity. He is the Faculty's first international Ontario Graduate Scholarship recipient and the author of the poetry collection *Black Passport*. Paul's workshop examines poetic storytelling as a powerful pedagogical tool for teaching complex social issues. Participants will engage creatively and critically with poetry and multimodal texts to rethink curriculum through humanizing and reflective approaches.



JUPITER WORKSHOP: KIM LOCKHART

Kim Lockhart has over 24 years of classroom experience and is a certified Structured Literacy Classroom Educator. She has contributed to Ontario's science-based Language Curriculum and currently teaches in B.Ed and M.Ed programs across Canada. Kim's workshop focuses on research-based literacy instruction as a key tool for breaking cycles of inequity. Participants will leave with practical strategies and resources to support strong reading and writing outcomes for all learners.



THE SUN: SHAUNA HEWITT

Shauna Hewitt is an experienced educator and family wellness consultant whose work spans Canada, Asia, and the UK. She is the founder of *Roots to Thrive*, a consulting practice grounded in heart-centred, relationship-based education. Her workshop emphasizes attachment, belonging, and connection as foundations for student success. Participants will gain practical tools to foster resilience, regulation, and thriving classroom communities.



MARS WORKSHOP: HOLLY OGDEN

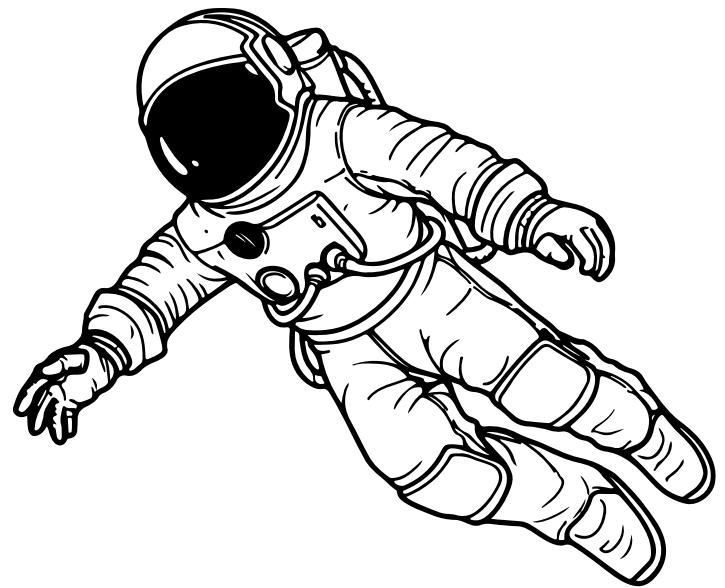
Holly Ogden is an educator and researcher at Queen's University with experience teaching across K-6 and post-secondary education. Her work focuses on inclusive learning environments and integrated curriculum design. In her workshop, Holly introduces the *Know-Do-Be Curriculum Framework* as a tool for meaningful planning and instruction. Participants will leave with actionable strategies to spark curiosity, foster critical thinking, and design engaging learning experiences.

PANEL

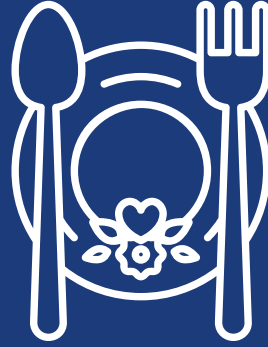
We are very excited to welcome our panelists who will have the opportunity to answer all of your education-related questions and more! They will be talking about their experiences in education and the knowledge they have gained working as an educator. Our speakers are a combination of workshop presenters, Concurrent Education students, and professional educators.

Introducing...

Anahita Behpour
Greg Grandesen
Kim Lockhart
Nate Zahn
Shauna Hewitt
Paul Akpomuje



BANQUET DETAILS



**ADDRESS: 285 KING STREET
EAST, KINGSTON MARRIOTT
6-11 PM**

DINNER MENU:

1st course: Butternut squash soup

2nd course: Ginger, soy, and lime poached chicken breast with garlic basmati rice

3rd course: Mocha mousse cake

DRINK SELECTION:

Drinks are available for purchase, both alcoholic and nonalcoholic choices are available. The bar opens around 6:30 pm and closes at the end of the night. Water is available through the night, at all times. If purchasing an alcoholic beverage, ID is required. Student Constables are in attendance at the event to ensure drinking age of delegates. Individuals hoping to buy any beverage from the bar will pay for their drink once it is ordered. The bar will be accepting both cash and card.



TRANSPORTATION TO AND FROM CONFERENCE

VIA RAIL TRAIN

Offers out of city delegates environmentally friendly and fast transportation to Kingston!

CITY BUS

Bus stops are scattered around Kingston, making it an accessible transportation method!
Busses are \$3.25 a ride.

UBER APP

Kingston offers Uber, which is a taxi-on-demand program! Download the app and request a ride from anywhere

PARKING AT DUNMAC

There is a large parking lot at DunMac, for those driving cars to the conference!



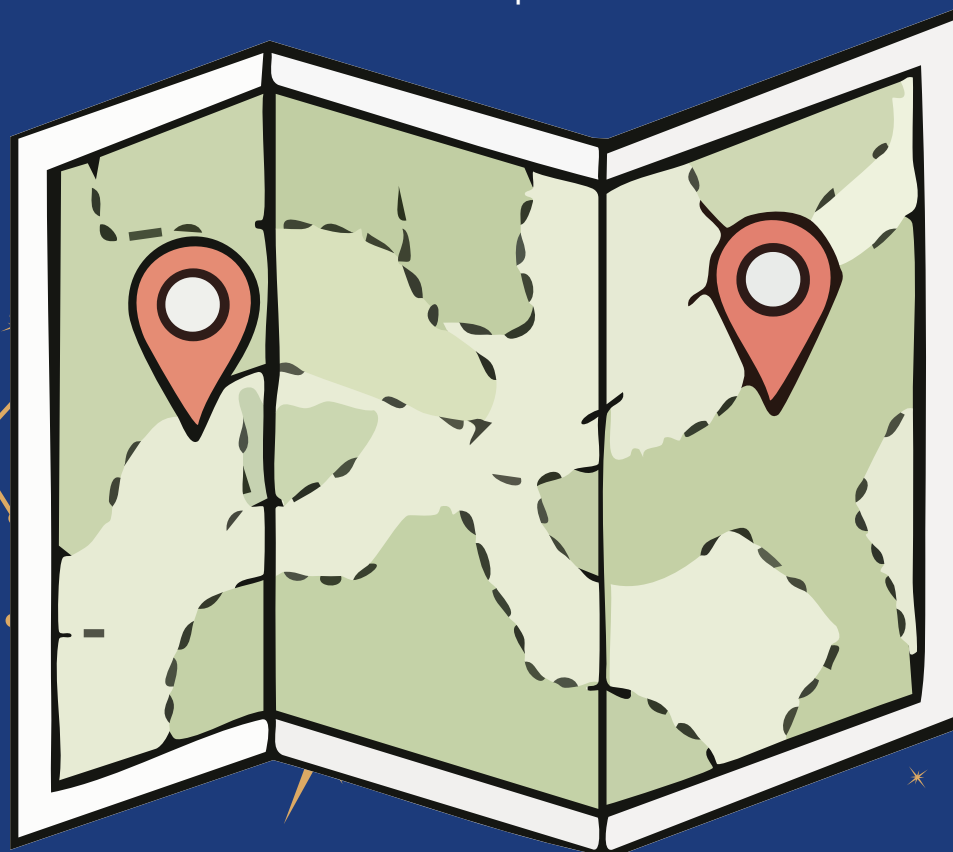
FROM HOTEL TO CONFERENCE

UBER / TAXI OR BY PERSONAL CAR

The Kingston Marriott is only an 8-minute ride from the conference venue

PUBLIC BUS:

There are several public bus options from Duncan McArthur Hall to the Kingston Marriott Downtown. Convenient routes include the 1, 2, 12, 18, 31, and 501, all of which travel from the Queen's campus area toward downtown Kingston. These buses drop off within a short walking distance of the Marriott, so you can choose the route that best fits your schedule. Bus routes and live departure times are available on Google Maps.



KINGSTON EATS

FOOD OPTIONS CLOSEST TO THE CONFERENCE (On Queen's Main Campus)



FOOD OPTIONS IN DOWNTOWN KINGSTON (Along Princess Street)





SPECIAL THANKS



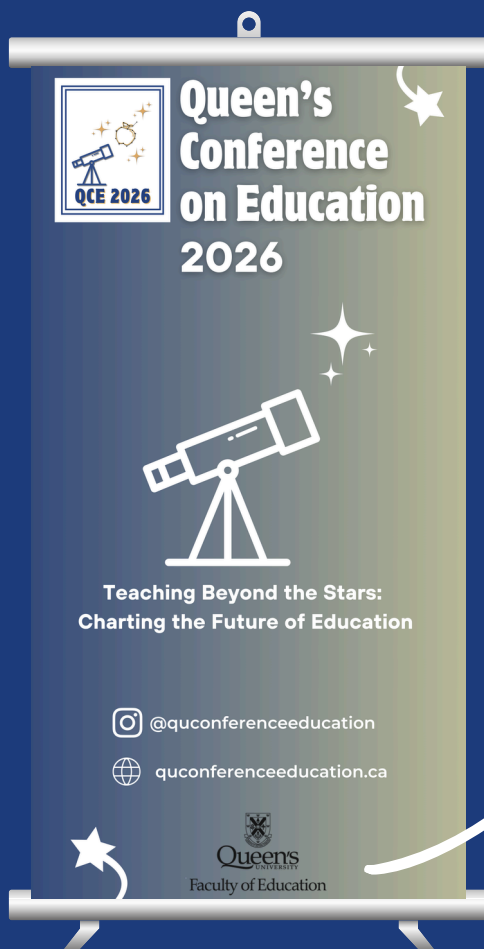
QCE
X
poppi
prebiotic soda



QCE
X
CO GRO



*Thank you to
Co Gro for
catering our
breakfast*



*The Queen's Faculty of
Education is our main
sponsor!
QCE would not be possible
without their donations
and support!*



THANK YOU LETTER

Dear Delegates,

Welcome to the Queen's Conference on Education 2026! We are so glad you're here.

This year marks the 25th annual QCE, and it is a privilege to welcome you to a conference built on connection, curiosity, and a shared commitment to the future of education. Your participation is what makes this space meaningful, and we're grateful you've chosen to spend the weekend with us.

Our 2026 theme, Teaching Beyond the Stars: Charting the Future of Education, invites us to imagine what education can become when we push beyond traditional boundaries. Over the next two days, we hope you feel encouraged to ask big questions, share ideas openly, and engage in conversations that challenge and inspire you.

QCE is not only a space for learning and reflection, but also for community. We hope you take time to connect with others, explore new perspectives, and carry these experiences with you into your studies, classrooms, and future professional paths.

Thank you for being a part of QCE 2026. We're excited to learn alongside you.

Wishing you an inspiring and rewarding conference,

Sincerely,

The QCE 2026 Executive Team

Isabella Vito, Conference Chair

Brooke Simons-Vatch, Director of External Logistics

Abigail Bickford, Director of Internal Logistics

Paige MacLachlan, Director of Finance

Isaac Moreno, Director of Special Events

Brooklyn Makins, Director of Sponsorship

Stephanie De Castro, Director of Marketing